



ELEVATING CORPORATE EXCELLENCE





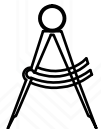
OUR TEAM

DEVELOPER



Al Hira Builders & Developers

ARCHITECT



**Innovative
Dimensions
PVT LTD.**

MARKETING CONSULTANT



MAVEN
MARKETING NETWORK
WHATEVER IT TAKES

ELECTRICAL CONSULTANT



Eleken Associates

STRUCTURAL ENGINEER



IAPACT
ENGINEERING
PLANNING
MANAGEMENT

MECHANICAL CONSULTANT



SEM Engineers
Structural Electrical Mechanical Environmental & Management Consultants

DIGITAL & OOH CONSULTANT



xpender
Your Brand Expander
advertising | marketing | events

COMMUNICATION AGENCY



BRANDCULTURE
NETWORK





AL HIRA BUILDERS & DEVELOPERS

Over the past three decades, Al-Hira Builders & Developers has solidified its reputation by adhering to principles of honesty and integrity. We place our client's interests at the forefront, delivering functional designs that surpass their expectations. We offer expertise in estimating, construction, project management, and preconstruction services, ensuring a premium product for our customers.

With our robust organizational and time management capabilities, we consistently complete projects within defined timelines. At Al-Hira, we are committed to providing exceptional services, distinguishing ourselves from our competitors by continuously updating our knowledge base and adopting advanced techniques.

By living our values, implementing effective strategies, and staying true to our mission, we are determined to achieve our vision of success.



A_HIRA NEW CITY



ATT ASIYA TRADE TOWER



CRYSTAL REDIDENCIA



AL HIRA ARCADE



ALHIRA CORNER



AL -RAHIM BUNGALOWS



A BENCHMARK IN CORPORATE EXCELLENCE

Corporate Trade Center Lahore is more than just a building - it is a statement, a testament to our unwavering commitment to providing workspaces that foster growth, innovation, and productivity. Infused with modern amenities, world-class infrastructure and located in the historic heart of Lahore's business hub, it stands as a shining beacon of corporate excellence.

Welcome to the future of work, welcome to Corporate Trade Center Lahore. At Corporate Trade Center Lahore, we're not just creating an office space but cultivating an environment that inspires, motivates, and thrives. Embracing the future while honoring our rich cultural heritage, we're shaping the cityscape with a new landmark that stands tall with pride.





INVEST IN THE FUTURE

Corporate Trade Center Lahore (CTCL) is not just an investment; it's an opportunity to become a part of Lahore's dynamic corporate evolution. This project represents a vision for the future of workspaces, melding modern amenities with a strategic location to stimulate productivity and growth.

As an investor, you'll contribute to Lahore's economic growth and benefit from the landmark project's potential returns. We welcome you to join the CTCL journey, to invest in a future defined by innovation, corporate excellence, and robust growth.

STRATEGIC VISION

Corporate Trade Center Lahore (CTCL) embodies a strategic vision to create a workspace that reflects the future of corporate environments. Our aim is to provide a hub that promotes innovation, productivity, and growth, aligning seamlessly with modern business demands.

With our strategic location at the heart of Lahore's business hub, we offer exceptional connectivity and visibility. Coupled with top-tier amenities and infrastructure, we're committed to creating an environment that supports productivity and safety. Our strategy is more than a plan; it's our commitment to transforming workspaces and elevating corporate excellence.

DESIGN MASTERY

At Corporate Trade Center Lahore (CTCL), our design philosophy is a fusion of form and function, aesthetics and practicality. We strive to create a workspace that promotes creativity and productivity, all within a visually striking architectural structure.

From the grandeur of the entrance lobby to the efficiency of the high-speed lifts and automated car parking, every detail is carefully curated. Our design caters to every aspect of modern business, making CTCL a symbol of design excellence and our commitment to shaping the future of workspaces.







LAHORE

THE BUSINESS HUB OF PUNJAB.

In the heart of Punjab, a vibrant and historic city resonates with the rhythm of progress and growth. This city is Lahore, known as the business hub of the province, thriving with diverse industries, bustling markets, and burgeoning tech and startup scenes. It is a city that deftly combines its rich history and traditions with the dynamism of a rapidly modernizing economy.

With its spirited life echoing from the Walled City to the skyscrapers, Lahore offers a unique blend of rich history, vibrant culture, and burgeoning modernism. Home to a myriad of industries, it attracts dynamic professionals, creative thinkers, and entrepreneurs, fostering an environment ripe for innovation.

The city's strategic position and robust connectivity make it an ideal hub for local and international businesses, providing a platform where ideas and opportunities converge. The welcoming environment and forward-thinking, entrepreneurial climate continue to draw investors and visionaries, affirming Lahore as the backbone of Punjab's economic vibrancy.







UNVEILING THE FUTURE TRANSFORMING WORKSPACES.

Steeped in history and culture, Davis Road in Lahore is the stage for our ambitious venture, the Corporate Trade Center Lahore (CTCL). At the heart of this bustling, iconic destination, the CTCL embodies our commitment to redefining office environments.

With meticulous planning and a vision to reshape workspaces, we are crafting an innovative, functional, and aesthetically appealing structure. This project marks not just our dedication to modern corporate culture but also underlines the strategic importance of its locale. With its rich heritage and vibrant commerce, Davis Road lends a unique backdrop to our landmark project, making CTCL the epitome of corporate excellence in the region.

NEAR BY

- 📍 Pearl Continental ⌚ 3 Minutes Drive
- 📍 Governor's House ⌚ 5 Minutes Drive
- 📍 Lawrence Garden ⌚ 5 Minutes Drive
- 📍 Ring Road ⌚ 10 Minutes Drive
- 📍 Gaddafi Stadium ⌚ 12 Minutes Drive
- 📍 Lahore Airport ⌚ 15 Minutes Drive



cicl
CORPORATE
CENTRO DE INVESTIGACIONES CIENTÍFICAS
LATINOAMERICANAS





G. T. ROAD

G. T. ROAD

CIRCULAR ROAD

LAHORE RING ROAD

ABOTT ROAD

EMPRESS ROAD

DURAND ROAD

EGERTON ROAD

SHAHRAH QUAID E AZAM

DAVIS ROAD

GOVERNOR
HOUSE

PEARL CONTINENTAL
LAHORE

LAWRENCE ROAD

SHAHRAH AIWAN E SANATO TJARAT

MALL ROAD

CANAL ROAD

LAHORE - KASUR ROAD



An aerial view of a modern rooftop club house. The space features a large rectangular swimming pool on the right side. Adjacent to the pool is a wooden deck. In the center, there is a lounge area with several grey sofas and wooden coffee tables. A long, rectangular planter box filled with various green plants runs along the left side of the lounge. A large, covered area with a wooden slat roof is visible on the left. The entire rooftop is surrounded by a dark metal railing. The background shows a cityscape with greenery and buildings.

THE ROOFTOP CLUB HOUSE

ELEVATE LIFESTYLE & EVENTS

Corporate Trade Center Lahore (CTCL) introduces the Rooftop Club House, a unique concept blending relaxation, networking, and event hosting. Offering panoramic city views redefines the corporate lifestyle by providing a perfect setting for gatherings and events.

CTCL is not just a workspace; it's a community fostering work-life balance and collaboration. Our Rooftop Club House enriches your corporate journey, underscoring our commitment to a vibrant and engaging corporate life.





CTCI
CORPORATE
TRADE CENTRE LAHORE





THE MAJESTIC LOBBY

A GRAND ENTRANCE

The Corporate Trade Center Lahore (CTCL) greets its patrons with an impressive lobby that reflects our project's grandeur and modernity. This lobby serves as a prelude to the innovative, functional, and aesthetically appealing workspace we bring to life on the iconic Davis Road. The majestic lobby is a testament to our meticulous planning and vision of redefining office environments - an invitation to experience a new dimension of corporate excellence.

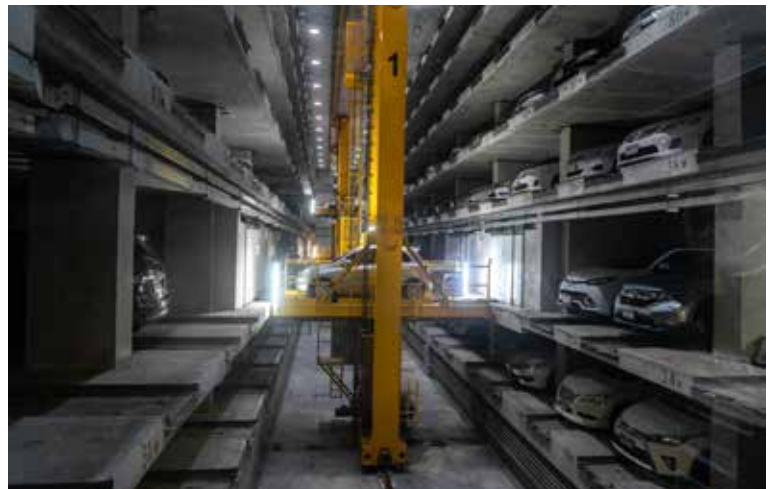




AUTOMATED CAR PARKING

INNOVATIVE CONVENIENCE

The Corporate Trade Center Lahore (CTCL) is leading the way in modern amenities with its state-of-the-art automated car parking system. This technologically advanced feature adds another layer of convenience, underscoring our commitment to providing a seamless experience for the businesses housed in our facility. With the push of a button, parking becomes effortless, thus saving time and reducing stress. This innovative addition aligns with our vision of shaping the future of workspaces, enhancing everyday functionality with the power of automation.









HIGH-SPEED LIFTS

EFFICIENCY IN MOTION

Embrace the rapid pace of modern business life, propelled by our sophisticated infrastructure. At Corporate Trade Center Lahore, we recognize that time is a precious asset. That's why we have integrated high-speed lifts into our building, ensuring swift and seamless transportation to your desired floor.

This exemplifies our unwavering commitment to creating work environments that foster efficiency and comfort. Experience the seamless flow of productivity as you ascend effortlessly to your destination, setting the stage for a truly dynamic work experience.



INTEGRATED FIRE EXTINGUISHING SYSTEM

SAFETY FIRST

At Corporate Trade Center Lahore, safety is a paramount concern. Our state-of-the-art fire extinguishing system reflects our dedication to providing a secure environment. The system is equipped with the latest technology to ensure rapid response during a fire, safeguarding our occupants and their assets. This commitment to safety complements our pursuit of excellence, blending cutting-edge facilities with peace of mind. Trust us to put your well-being first.









COMPREHENSIVE BACKUP GENERATORS

RELIABLE POWER

Corporate Trade Center Lahore is equipped with a comprehensive backup generator system to ensure business operations remain uninterrupted. Our commitment to continuous power supply means your business can operate seamlessly, even during power outages. This feature underlines our dedication to reliability, affirming our promise to provide a workspace that caters to all your needs. Knowing we've covered your power needs, you can work confidently with us.



THE EARTHQUAKE-RESILIENT STRUCTURE

SAFETY THROUGH SEISMIC DESIGN

Corporate Trade Center Lahore (CTCL) exemplifies safety and well-being through earthquake-resilient design. Our structure meets the highest seismic safety standards incorporating innovative engineering techniques and superior construction materials, ensuring its durability during seismic disturbances.

This earthquake-resistant approach reflects CTCL's commitment to providing a secure working environment. At CTCL, we are not just building offices but engineering safety and reliability into every facet of our design. Trust in our dedication as you conduct your business with peace of mind.









THE ECO-FRIENDLY MASTERPIECE

EFFICIENCY AT ITS CORE

The Corporate Trade Center Lahore stands as a testament to our unwavering commitment to sustainability. Designed with energy-efficient building practices in mind, every aspect of this architectural marvel is optimized to reduce energy consumption, lower operational costs, and minimize environmental impact. From the stunning glass-clad exterior to the meticulously engineered interior, our focus on eco-consciousness is evident in every detail.

At Corporate Trade Center Lahore, we are not simply constructing an office building but sculpting an eco-friendly future for businesses in Lahore. With cutting-edge energy-saving lighting systems, state-of-the-art HVAC units, and superior insulation, we have seamlessly integrated technologies that promote sustainable resource usage. Join us in embracing sustainability and being a part of a greener tomorrow.



FIBER-OPTIC COMMUNICATION SYSTEM

FAST & FLAWLESS CONNECTIVITY

At the Corporate Trade Center Lahore, we understand the critical role of robust and reliable communication in today's fast-paced business world. Our building has a state-of-the-art fiber-optic communication system, ensuring fast, efficient, and seamless connectivity. It's our commitment to keeping you connected, fostering productivity and smooth business operations. Dive into the future of communication at the Corporate Trade Center Lahore.









ON-SITE GYM

ACTIVE LIFESTYLES PROMOTED

At Corporate Trade Center Lahore, we believe in the balance of work and wellness. Our on-site gym, equipped with modern fitness equipment, provides a convenient solution for maintaining an active lifestyle amidst a busy workday. Cultivate a healthy work-life balance and keep your physical wellness in check without stepping out of your workspace. Embrace an active lifestyle at the Corporate Trade Center Lahore.



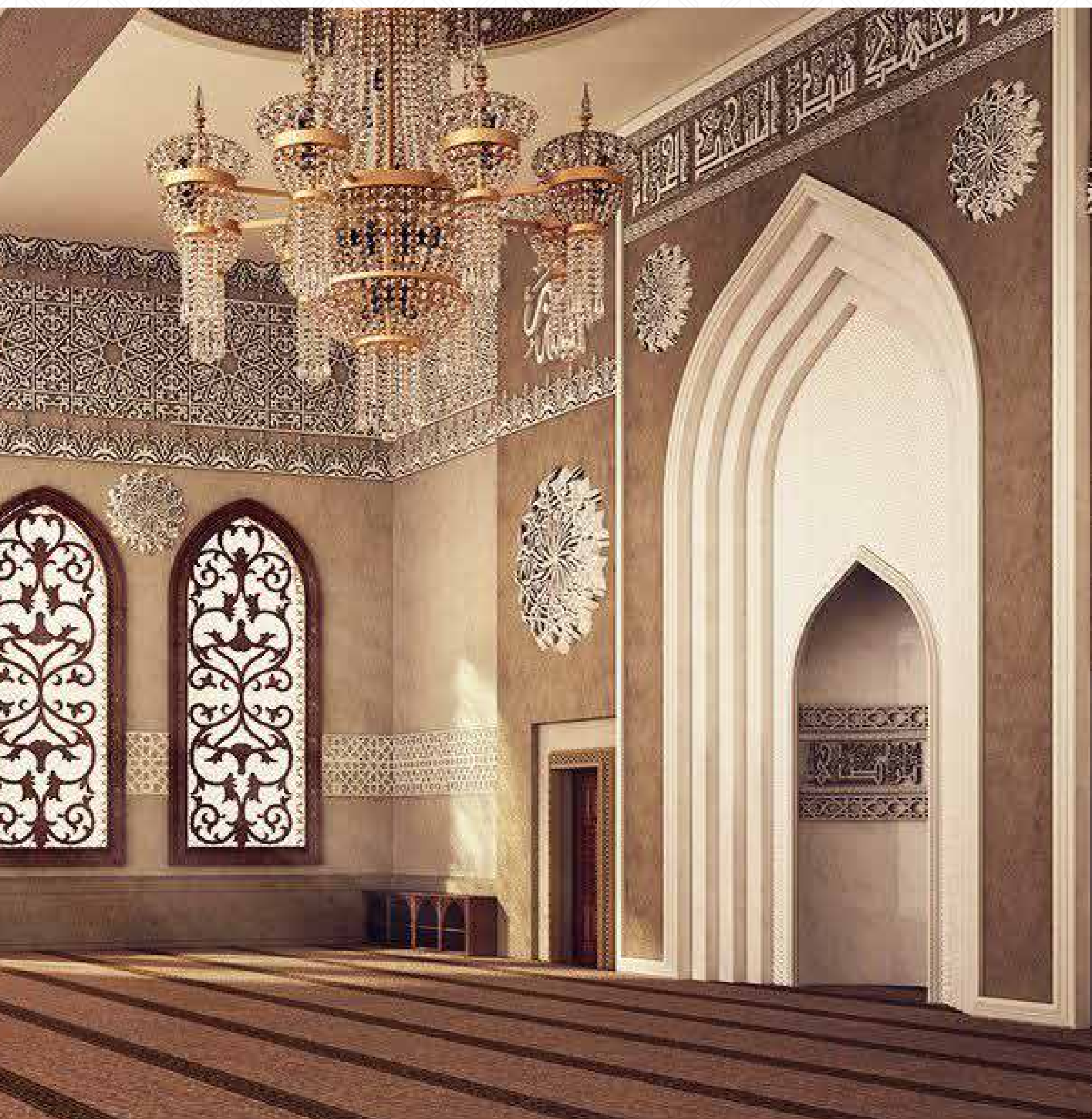


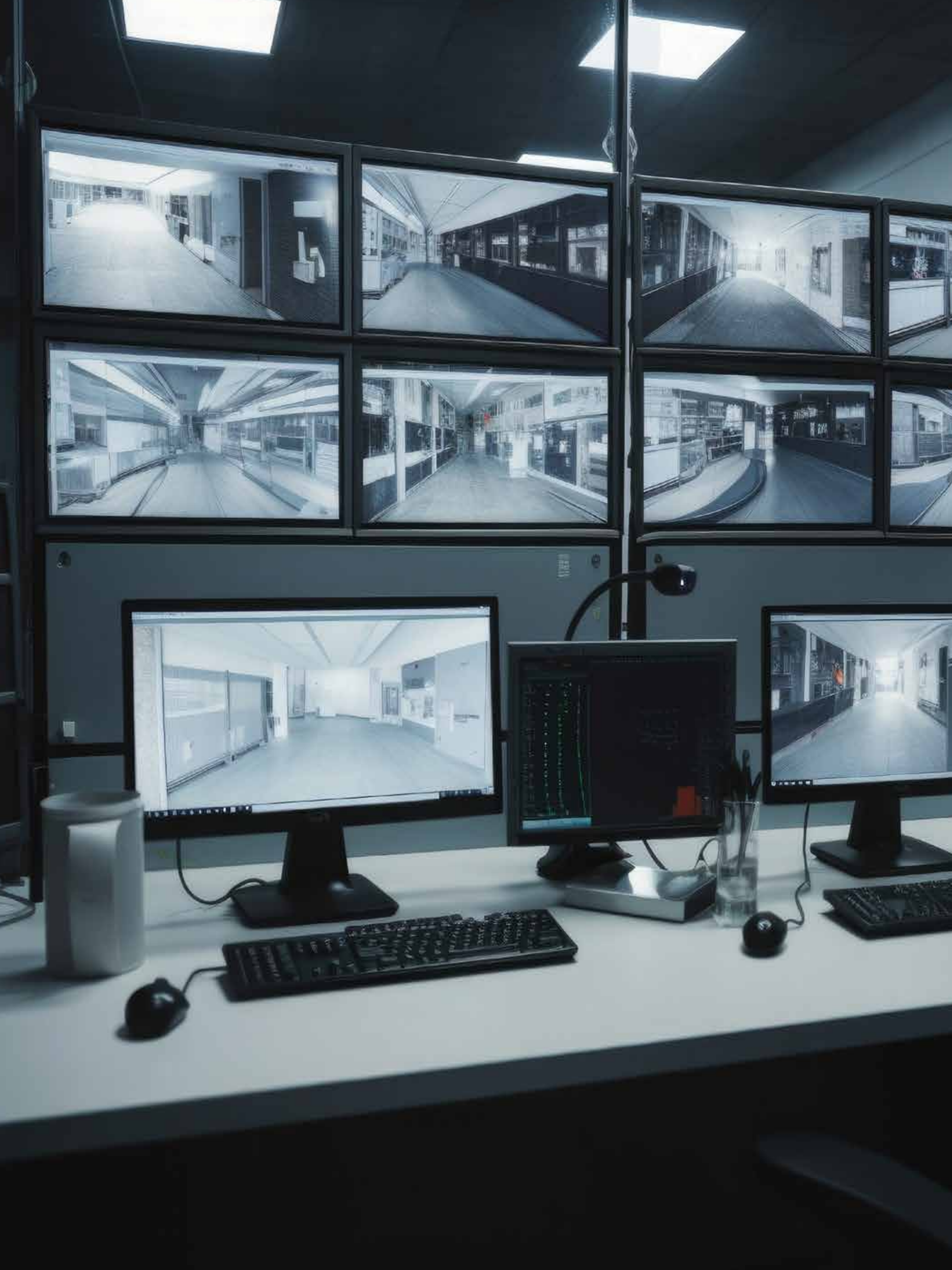
ON-SITE MOSQUE

SERENITY IN DEVOTION

An oasis of tranquility amidst the buzz of the corporate world, our on-site Mosque is a testament to our respect for spiritual needs and values. This dedicated space, crafted with thoughtful design and attention to detail, offers a peaceful retreat for prayer and reflection throughout the day, allowing our occupants to maintain a harmonious work-life balance.









ADVANCED CCTV SURVEILLANCE

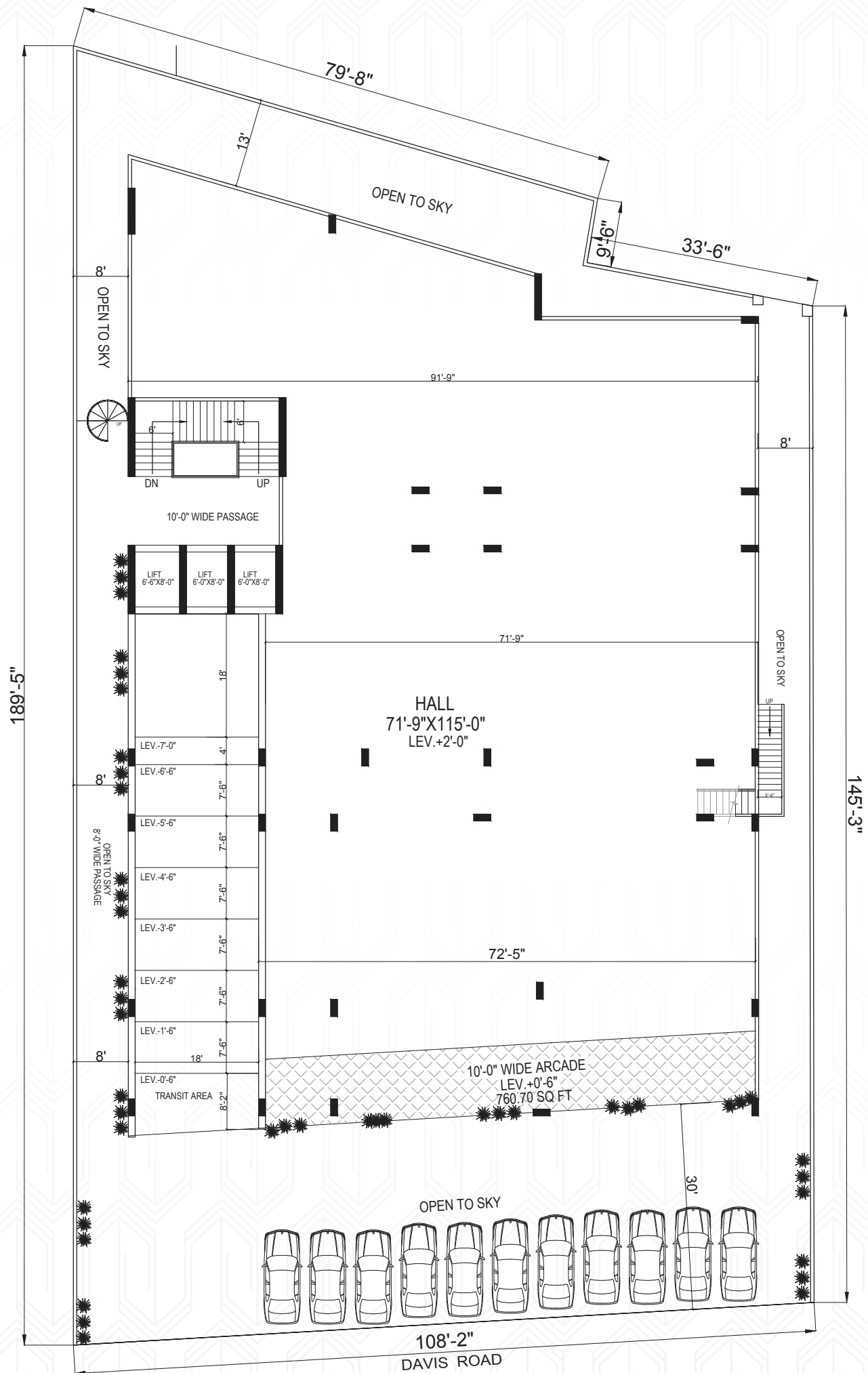
UNWAVERING SECURITY

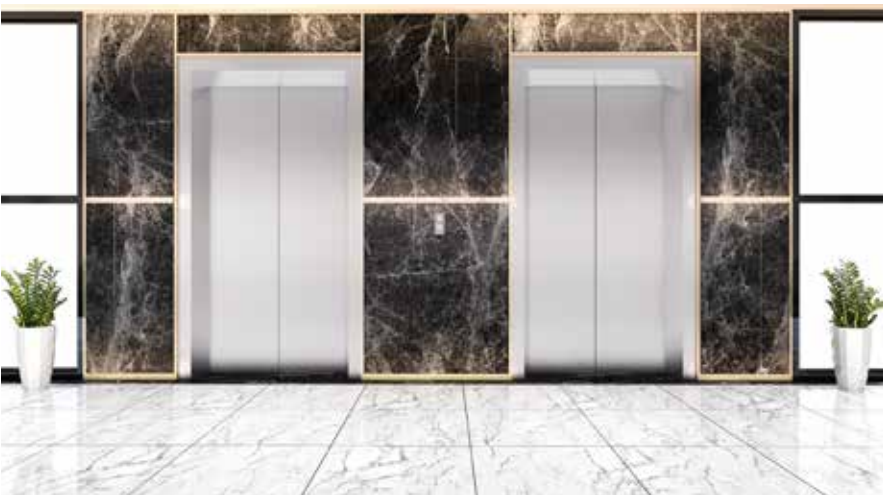
At Corporate Trade Center Lahore (CTCL), we ensure the security of our occupants with our advanced Closed-Circuit Television (CCTV) surveillance system. This system provides round-the-clock security monitoring across all common areas and points of entry, maintaining an unbroken line of sight.

Our comprehensive CCTV system illustrates our commitment to providing all occupants with a safe and secure environment. At CTCL, your peace of mind and security are our utmost priority, reinforcing our reputation as a secure hub of corporate excellence.

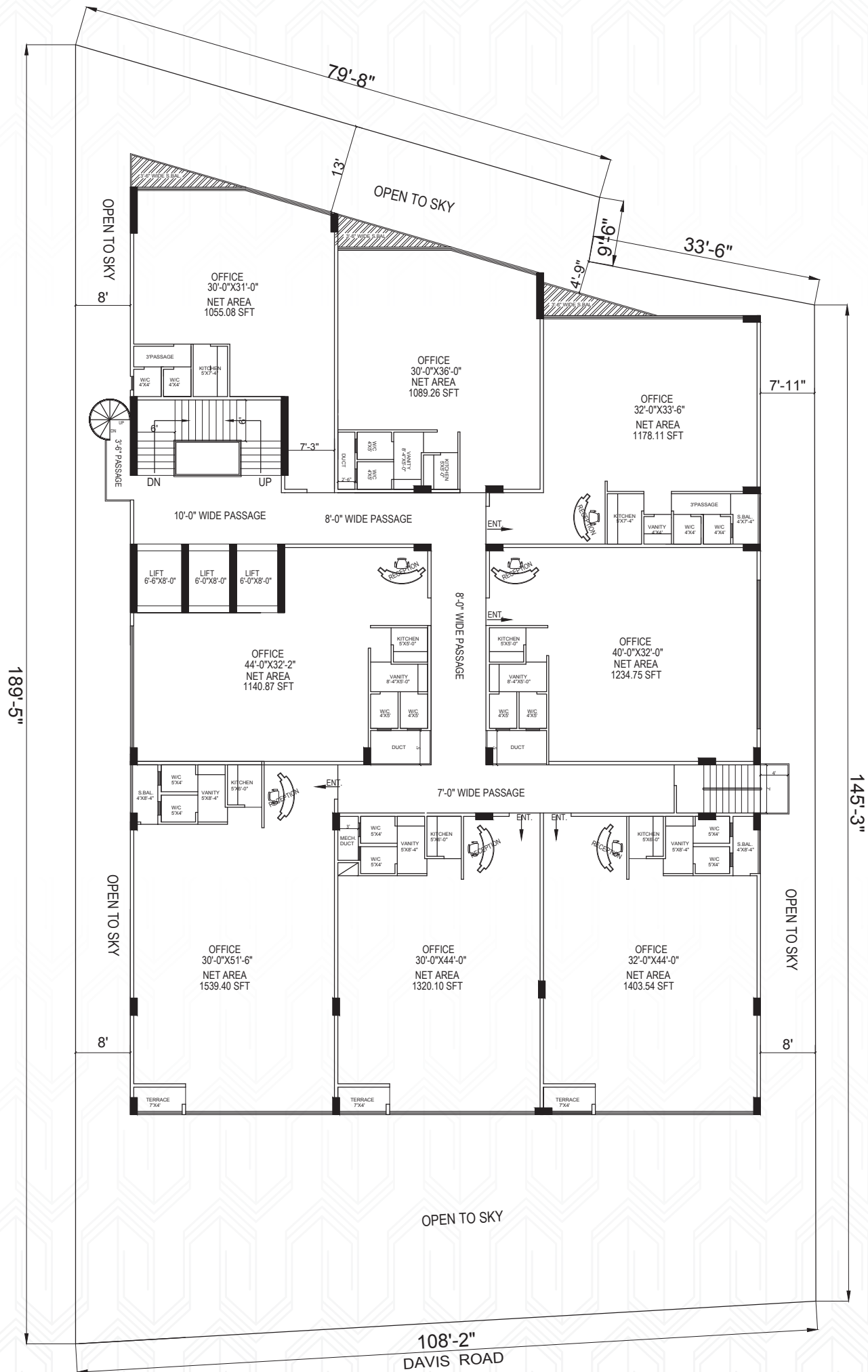


GROUND FLOOR PLAN



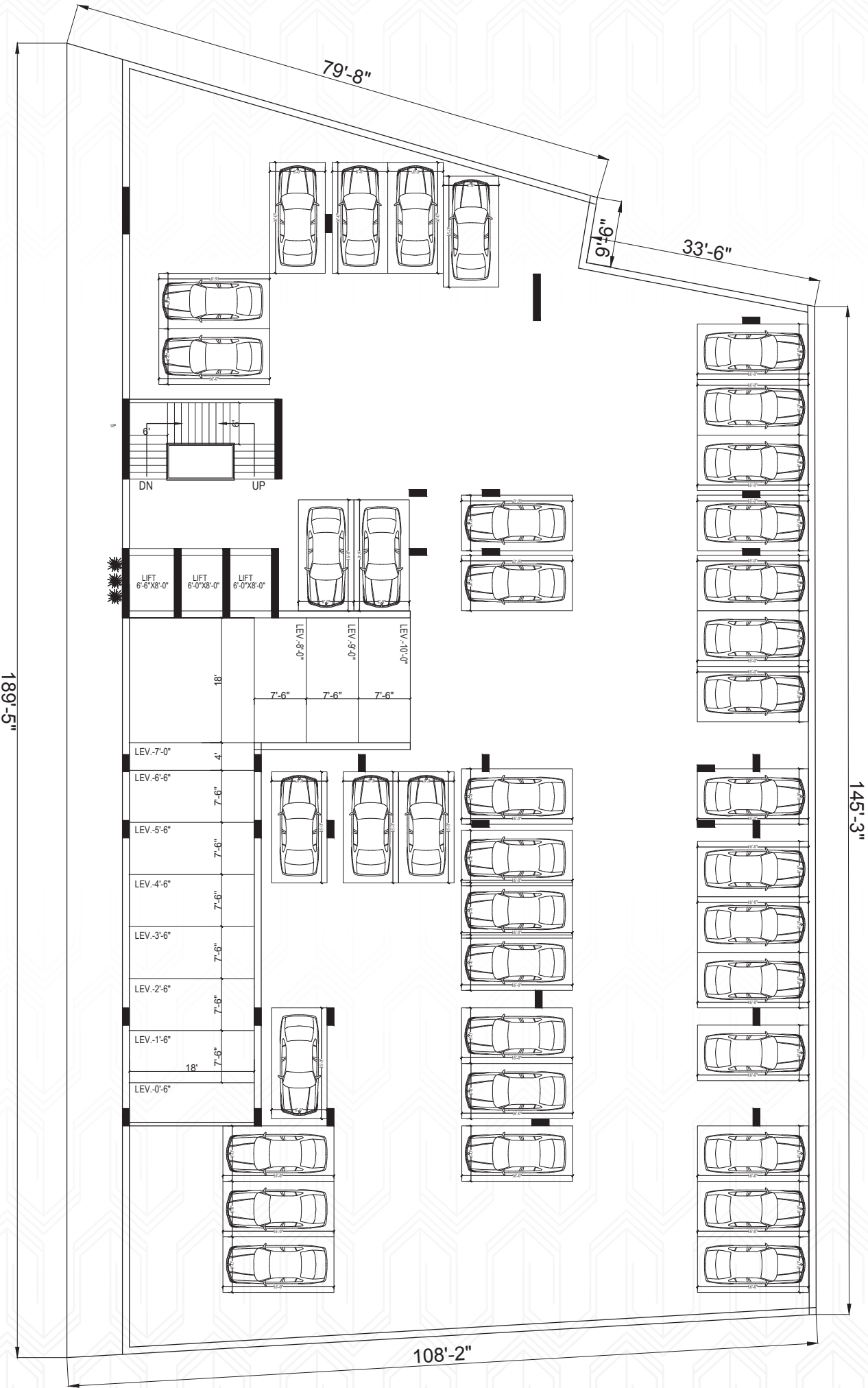


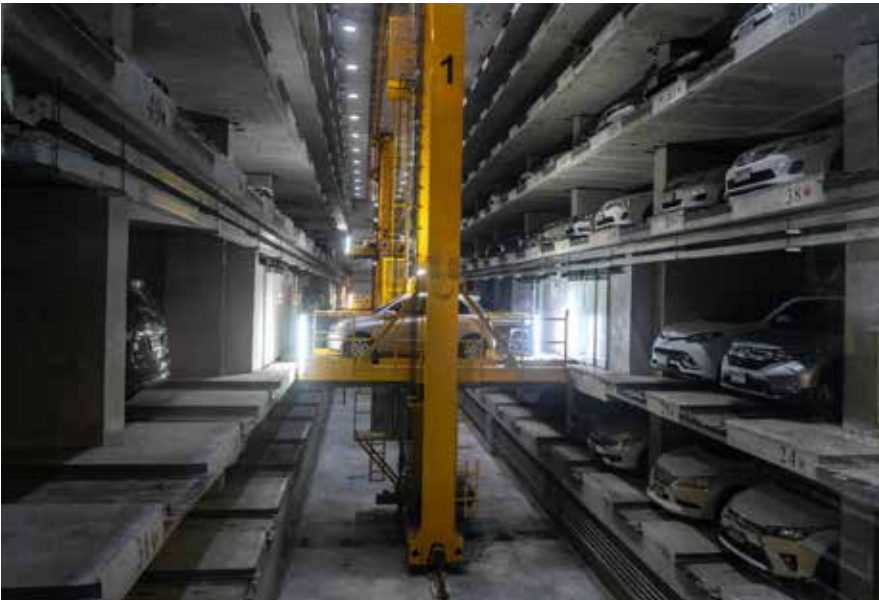
TYPICAL FLOOR PLAN





PARKING









TAILORED FACILITIES MANAGEMENT

YOUR SUCCESS, OUR PRIORITY

At Corporate Trade Center Lahore, we offer tailored facilities management solutions to ensure your business thrives. As the builder and caretaker of this architectural masterpiece, we guarantee efficient services that keep the premises in great shape.

Our dedicated team provides comprehensive maintenance, security, and operational support, allowing you to focus on your core business objectives. With our proactive approach and attention to detail, you can experience peace of mind knowing that your workspace is in expert hands.

Trust us to handle the day-to-day operations, so you can concentrate on achieving your goals. Corporate Trade Center Lahore is more than a building; it's a complete solution to support your success.





CTCL

CORPORATE TRADE CENTER LAHORE

DEVELOPER



At Hira Builders & Developers

ARCHITECT



**Innovative
Dimensions
PVT LTD.**

MARKETING CONSULTANT



MAVEN
MARKETING NETWORK

ELECTRICAL CONSULTANT



ElekEn Associates

STRUCTURAL ENGINEER



IMPACT
ENGINEERING
PLANNING
MANAGEMENT

MECHANICAL CONSULTANT



SEM Engineers
Structural Steel Mechanical Electrical & Plumbing Consultants

DIGITAL & OOH CONSULTANT



xpender
Your Brand Expander
advertising | marketing | events

COMMUNICATION AGENCY



BRAND CULTURE
NETWORK

DISCLAIMER

The pictures and creative visualizations included in this brochure are intended to provide an artistic interpretation and representation of the subject matter. While efforts have been made to ensure their accuracy, they may not depict exact details or proportions. The visualizations are for illustrative purposes only and should not be considered as a precise depiction of reality.